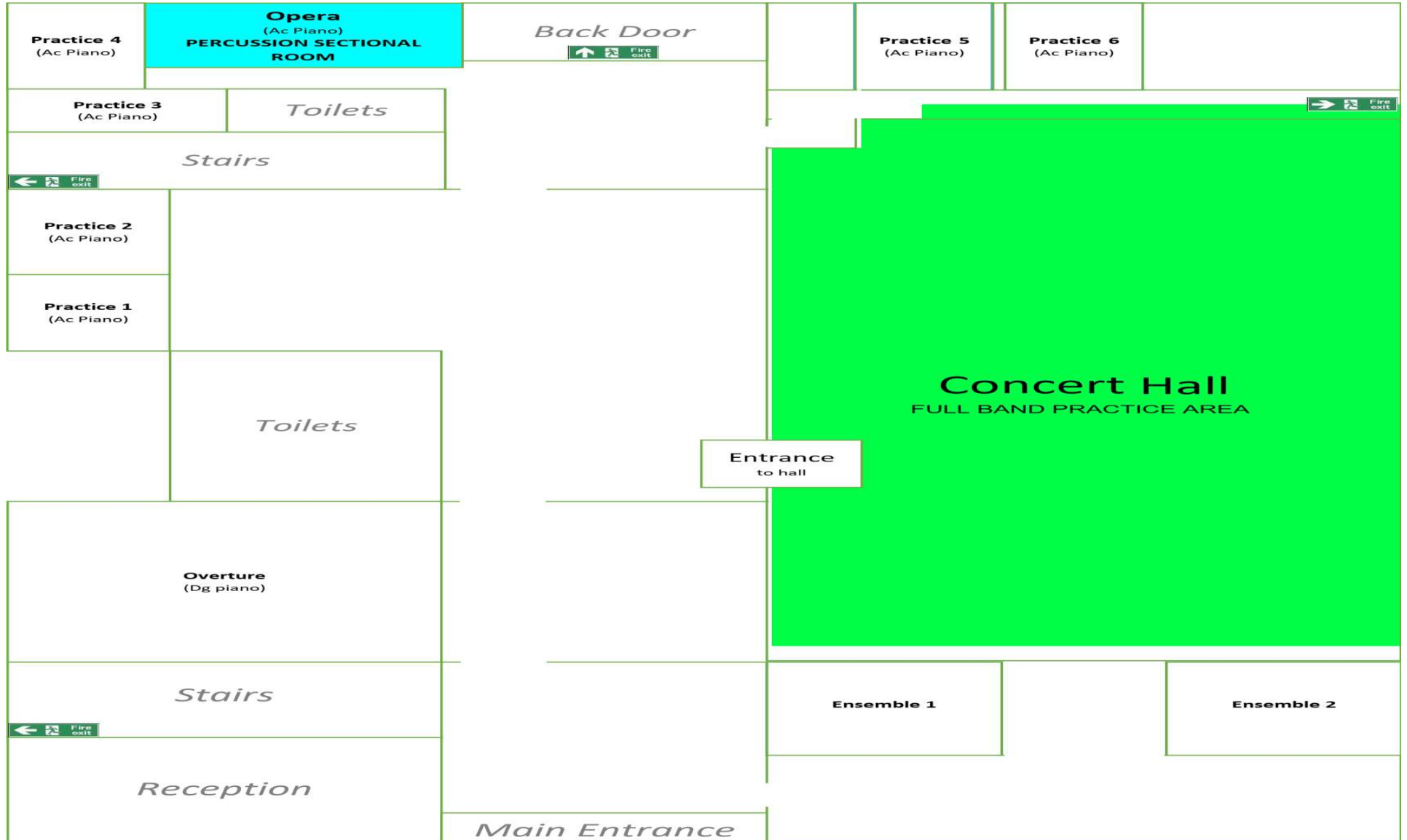
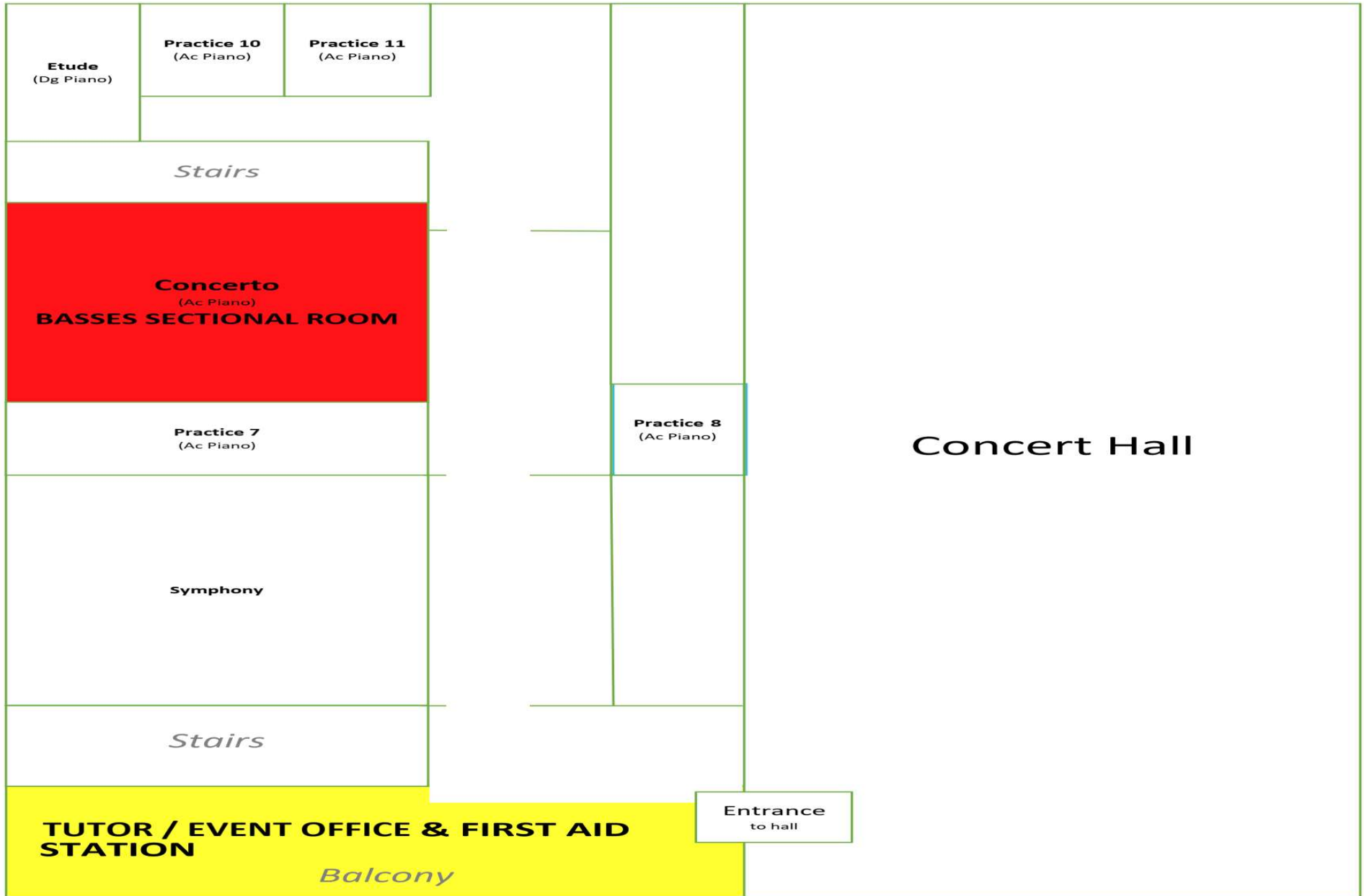


**SECTIONAL / FULL BAND PRACTICE ROOM PLANS**

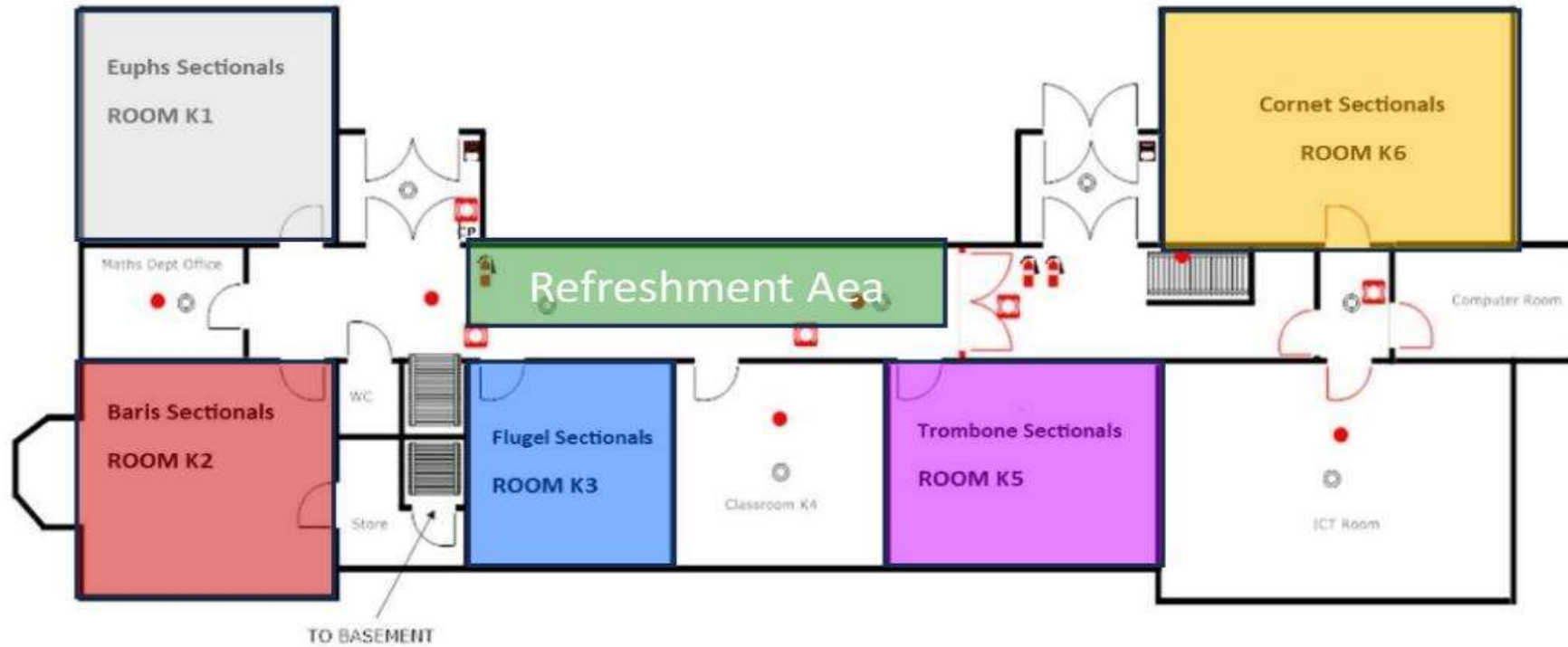
Routh Hall Ground Floor



Routh Hall 1st Floor



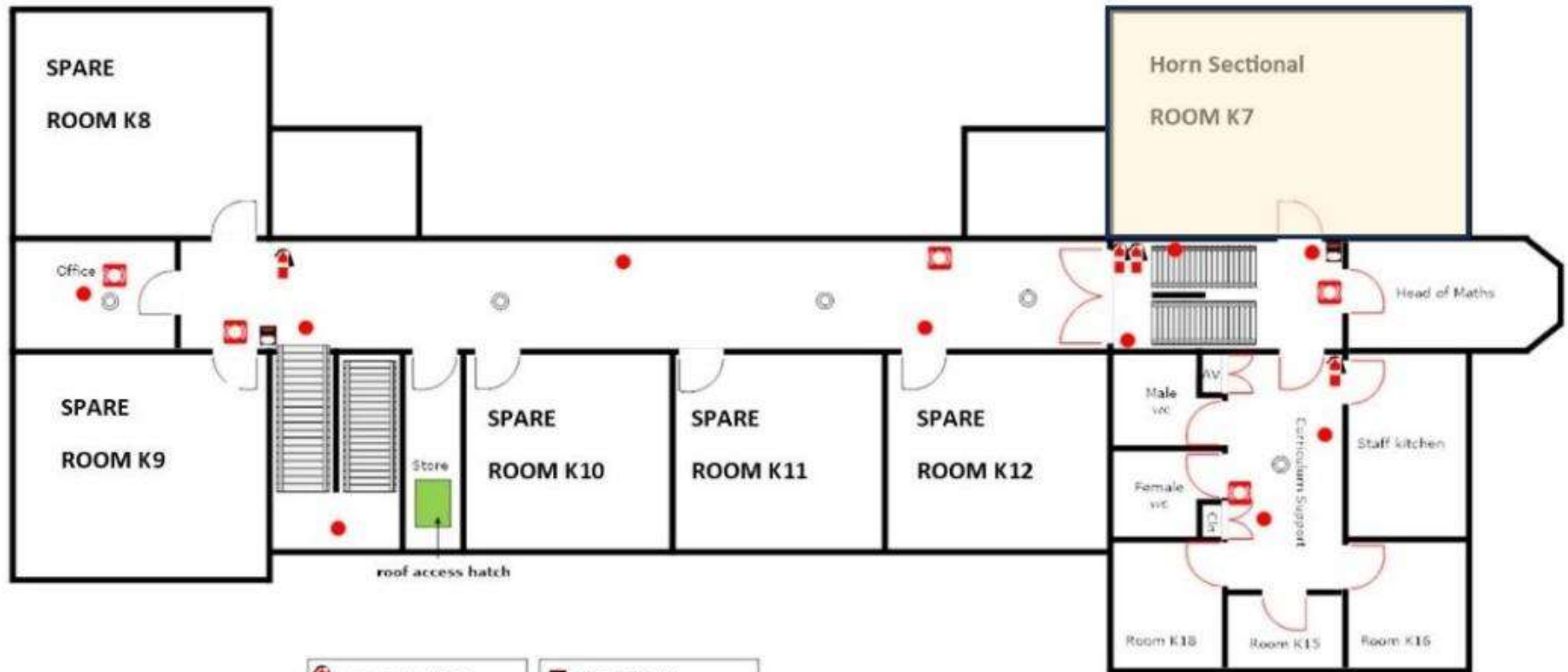
Kyteless Ground Floor



 Fire Extinguisher	 Fire Call Point
 Emergency Light	 CP = Fire Control Panel
 Heat / Smoke Detector	 FB = Fire Blanket
 Fire Alarm Sounder	
 Fire Door	

**Kyteless**  
**Ground Floor Plan**  
**Not to Scale**
















Kyteless 1<sup>st</sup> Floor



	Fire Extinguisher		Fire Call Point
	Emergency Light		CP = Fire Control Panel
	Heat / Smoke Detector		FB = Fire Blanket
	Fire Alarm Sounder		
	Fire Door		

**Kyteless**  
**First Floor Plan**  
**Not to Scale**

### ROOM LOCATION KEY

PRACTICE ROOM	ROOM NAME	FLOOR	COLOUR
Cornet Sectional Room	Kyteless – Room K6	Ground	
Flugel Horns Sectional Room	Kyteless – Room K3	Ground	
Horns Sectional Room	Kyteless – Room K7	1st	
Euphonium Sectional Room	Kyteless – Room K1	Ground	
Baritone Sectional Room	Kyteless – Room K2	Ground	
Delegate Refreshment Area	Kyteless - Ground Floor Corridor	Ground	
Basses Sectional Room	Roth Hall - Concerto	1st	
Percussion Sectional Room	Roth Hall - Opera	Ground	
Full Band Practice Area	Roth Hall – Concert Hall	Ground	
Tutor Area , Event Office & First Aid Station	Roth Hall - Work Lounge	1st	
Webber Accommodation	N/A	Map A	
Preparatory School Car Park	N/A	Map A	
Roth Concert Hall	N/A	Map A	
Kyteless Rehearsal Rooms	N/A	Map A	
Dining Hall	N/A	Map A	
Site Pedestrian Transit Routes	Not Applicable	See Map A	N/A
Pedestrian Route from Houseman Accommodation to School	Not Applicable	See Map B	N/A
Vehicle Travel Route from Houseman Accommodation to Preparatory School Car Park	Not Applicable	See Map C	N/A
Vehicle Travel / Walking Route from Houseman Accommodation to Sanders Park (Outdoor Concert Venue)	Not Applicable	See Map D	N/A
Vehicle Travel from Webber Accommodation to Sanders Park (Outdoor Concert Venue)	Not Applicable	See Map E	N/A

### **EVENT POST CODES**

WEBBER ACCOMODATION POST CODE: B60 2AF

HOUSEMAN ACCOMMODATION POST CODE: B61 7JN

BROMSGROVE PREPARATORY SCHOOL CAR PARK: B60 2AF

SANDERS PARK (OUTDOOR CONCERT VENUE): B61 7JP